

# The Eastnor

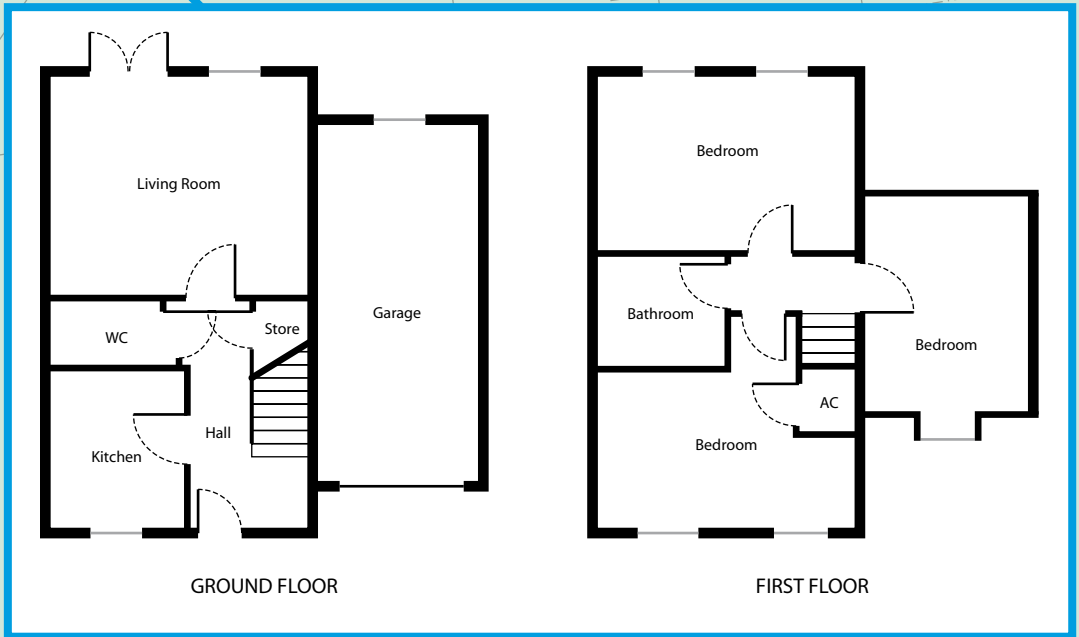
3 Bedroom Detached Home

Plot No. 6



## ROOM DIMENSIONS

Ground Floor		First Floor	
Living Room	11' 9" x 13' 8"	Bedroom 1	9' 4" x 13' 8"
Kitchen	8' 6" x 7' 1"	Bedroom 2	8' 6" x 13' 8"
		Bedroom 3	8' 7" x 12' 2"
		Bathroom	6' 6" x 6' 3"



SCHOOL  
GRANGE  
CRADLEY

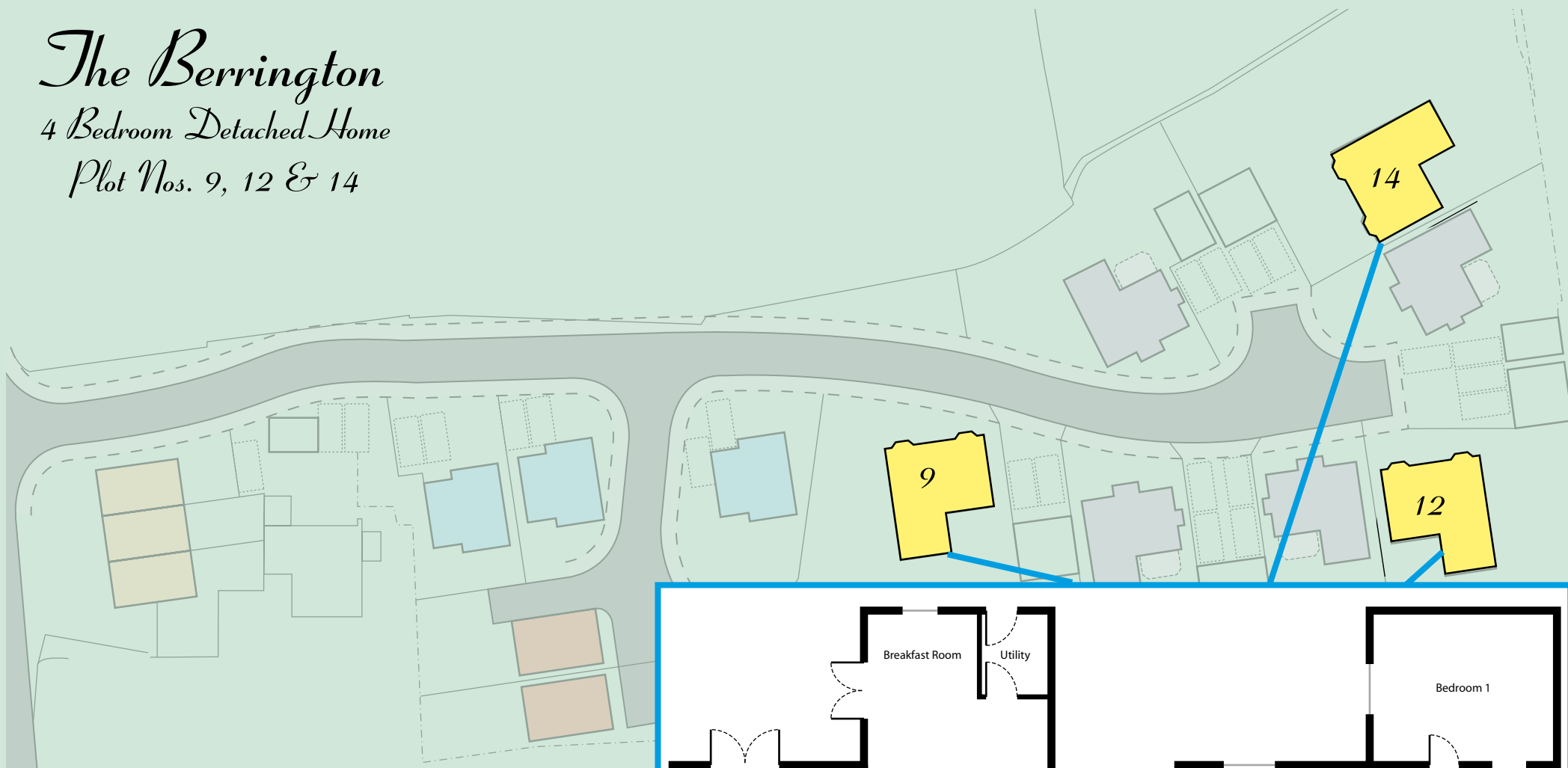
*The Eastnor*  
*3 Bedroom*  
*Detached Home*



# The Berrington

4 Bedroom Detached Home

Plot Nos. 9, 12 & 14



## ROOM DIMENSIONS

### Ground Floor

Living Room 11' 6" x 21' 10"

Kitchen 15' 2" x 23'

Dining Room 10' 8" x 11' 7"

### First Floor

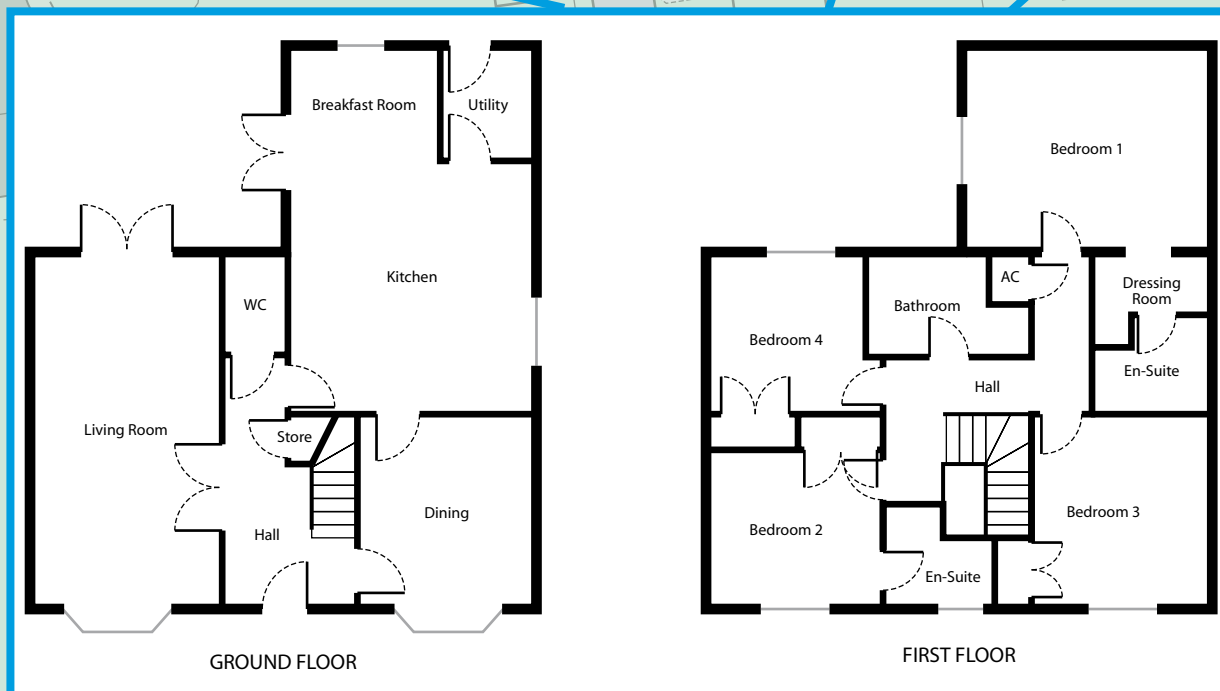
Bedroom 1 15' 2" x 12' 2"

Bedroom 2 8' 6" x 10' 8"

Bedroom 3 10' 11" x 11' 10"

Bedroom 4 9' 7" x 9' 8"

Bathroom 6' x 7' 8"



SCHOOL  
GRANGE  
CRADLEY

*The Berrington*  
*4 Bedroom Detached*  
*Home*



# The Priory

4 Bedroom Detached Home

Plot Nos. 10, 11, 13 & 15



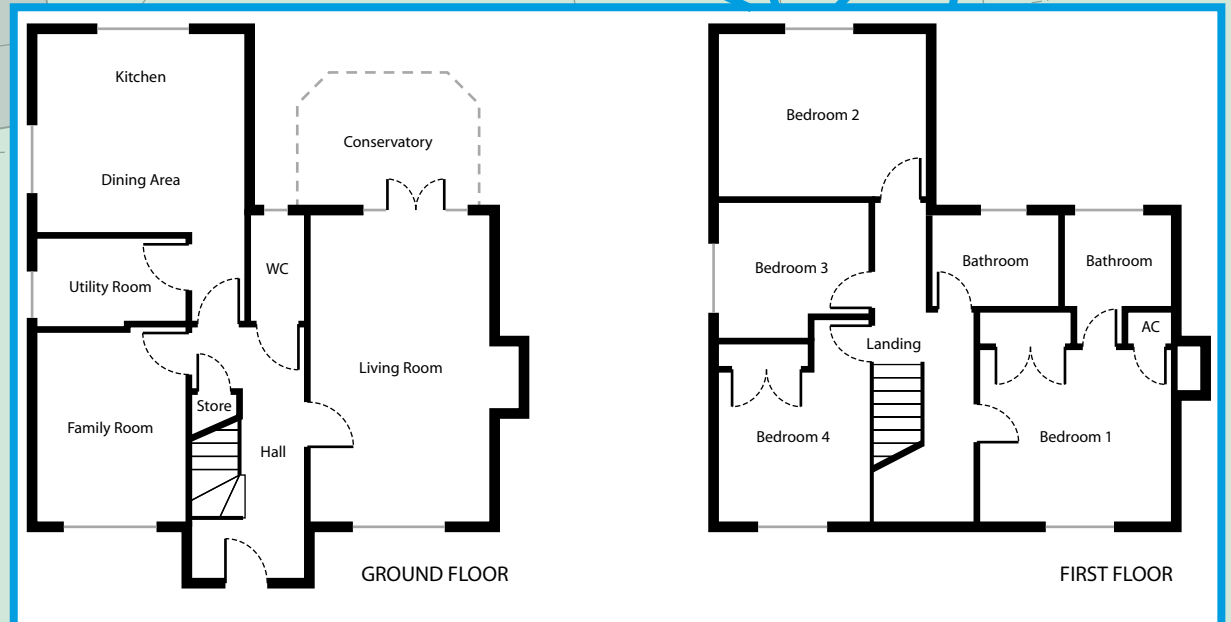
## ROOM DIMENSIONS

### Ground Floor

Living Room	11' 2" x 18' 10"
Kitchen	12' 7" x 12' 3"
Family Room	9' 1" x 11' 8"
Utility	5' 6" x 9' 1"

### First Floor

Bedroom 1	11' 10" x 10' 8"
Bedroom 2	12' 7" x 10' 1"
Bedroom 3	9' 3" x 9' 3"
Bedroom 4	9' 3" x 8' 5"
Bathroom	8' 4" x 5' 7"



SCHOOL  
GRANGE  
CRADLEY

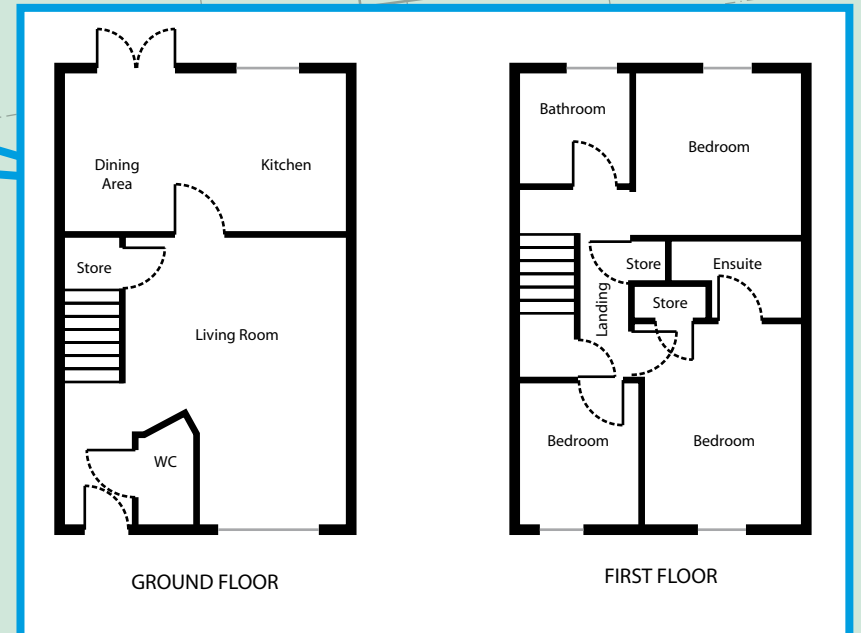
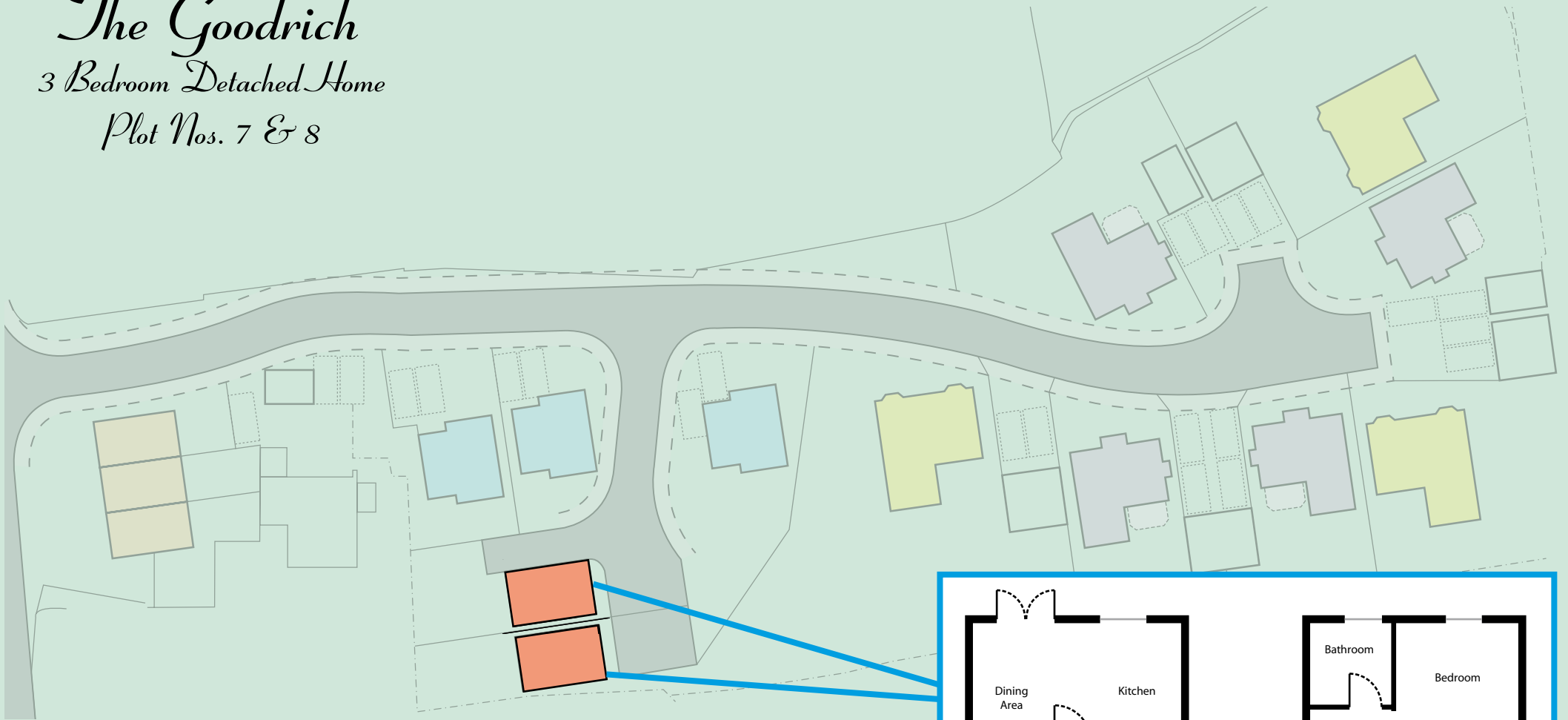
*The Priory*  
*4 Bedroom*  
*Detached Home*



# The Goodrich

3 Bedroom Detached Home

Plot Nos. 7 & 8



## ROOM DIMENSIONS

Ground Floor

Living Room 12' 10" x 16' 9"

Kitchen/Diner 16' 3" x 9'

First Floor

Bedroom 1 9' 1" x 11' 9"

Bedroom 2 9' 3" x 9' 8"

Bedroom 3 8' 1" x 6' 10"

Bathroom 6' 2" x 6' 3"

SCHOOL  
GRANGE  
CRADLEY

*The Goodrich*  
*3 Bedroom*  
*Detached*  
*Home*

